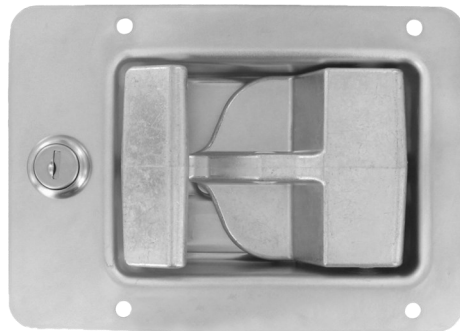
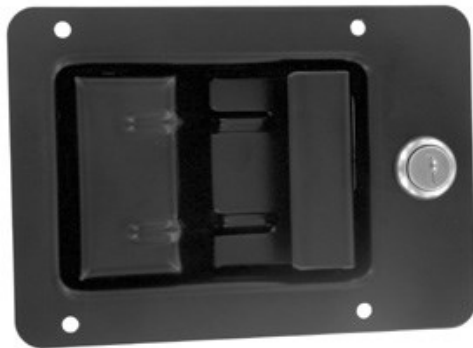


030-0500  
Pivoting Catch  
Compartment Latch

030-0550 Heavy Duty  
Pivoting Catch  
Compartment Latch



This latch was specifically designed for storage and compartment door for off-road vehicles including agricultural and construction equipment and industrial enclosures. It features a pivoting hook latching design and a reverse paddle design that is suited for top hinged doors and resistance to the insertion of foreign objects.

**DESIGNED FOR:**

- On or off-highway vehicle applications - construction, mining, agricultural
- Service and utility truck body doors
- Electrical switch and transformer boxes

**Global Locations:**

**TriMark Corporation**  
500 Bailey Avenue  
P.O. Box 350  
New Hampton, Iowa 50659  
United States  
Tel: 641-394-3188  
Fax: 641-394-2392  
1-800-447-0343  
www.trimarkcorp.com

**TriMark Europe**  
Cedar Court  
Walker road  
Bardon Hill  
Coalville LE67 1TU  
United Kingdom  
Tel: +44(0)1530 512460  
Fax: +44(0)1530 512461  
www.trimarkeu.com

**TriMark (Xuzhou)**  
Building A5 Jingwu Road  
Xuzhou Economic  
Development Zone  
Xuzhou, Jiangsu  
221004 PR China  
Tel: +86 516 8773 0018  
Fax: +86 516 8773 0058  
www.trimarkcn.com



TriMark. Interactive. Product. Selector



TriMark



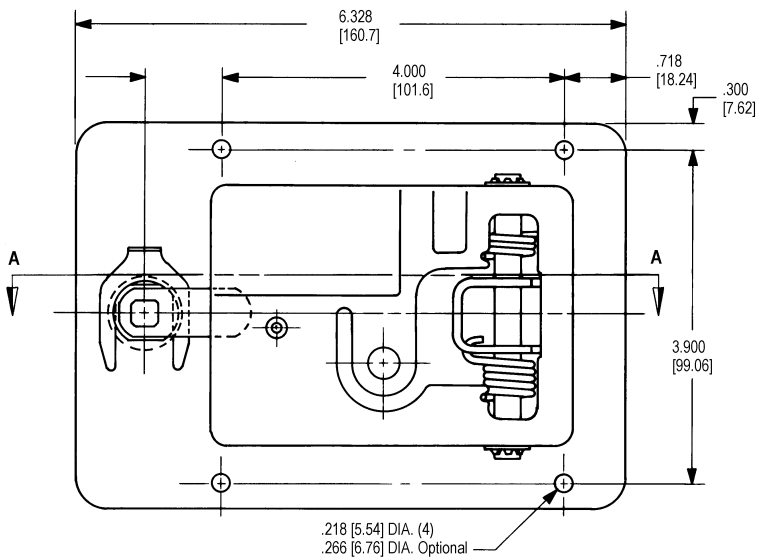
TriMark Corporation

### FEATURES/BENEFITS:

- Pivoting catch allows relative movement between the door and frame when the vehicle frame flexes
- Components are spring loaded internally to minimize effects of vibration
- Reverse paddle design of the compartment latch is suited for top hinged doors and provides resistance to insertion of foreign objects
- Two levels of performance/duty: the heavy duty version (030-0550) provides a higher level of resistance to vibration and wear

### AVAILABLE:

- Key locking - keyed alike with most common key codes to match paddle actuators used for operator enclosures
- Non-locking
- Padlockable for increased security
- Optional hole patterns



### MATERIAL:

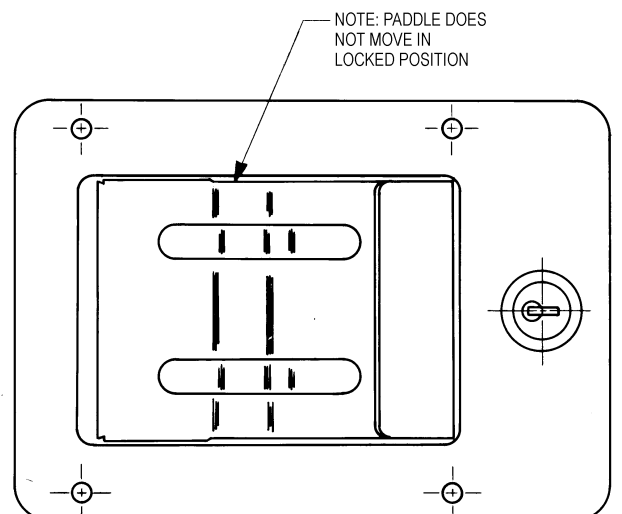
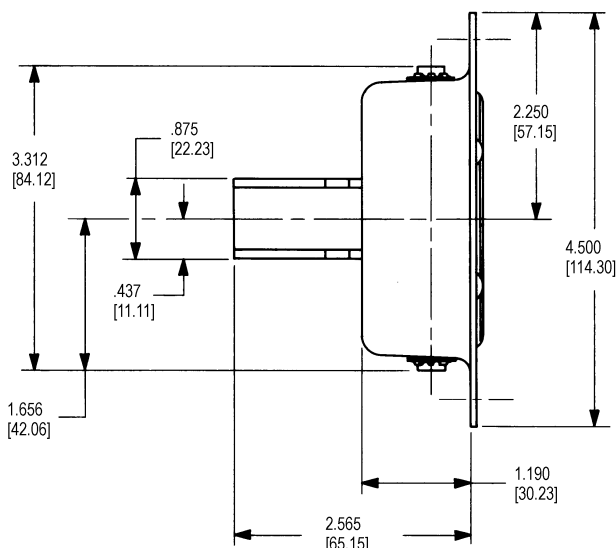
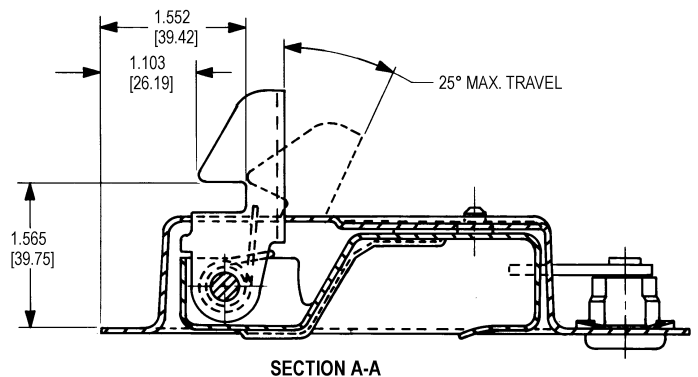
- All steel reinforced construction

### FINISH:

- Zinc plate, clear chromate conversion coat for maximum paint adhesion and resistance to rust
- Black powder coat

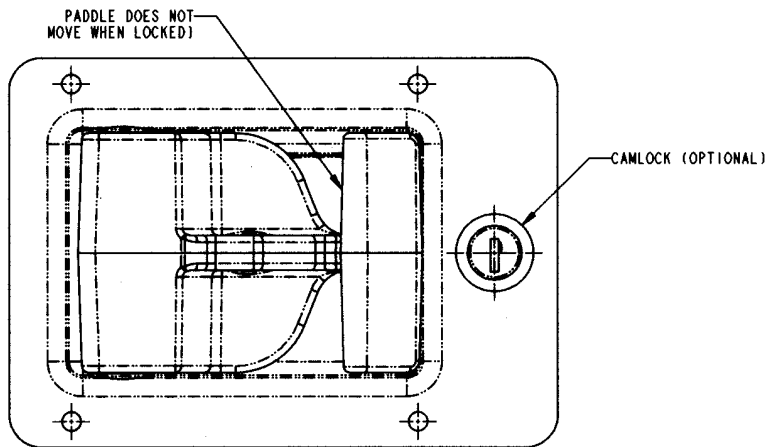
### INSTALLATION:

- Lock cylinder may be installed after the latch has been assembled into the door and painted
- (4) 3/16" M4 diameter steel "pop" rivets or 1/4-20 M6 screws (not included)



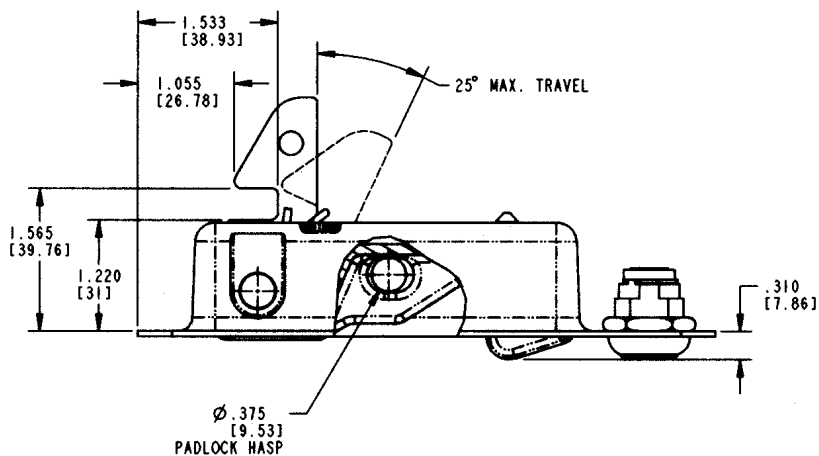
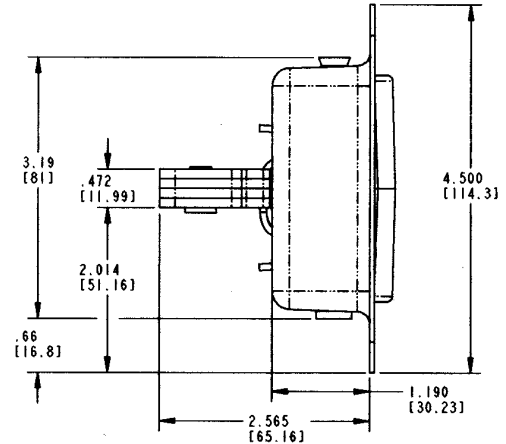
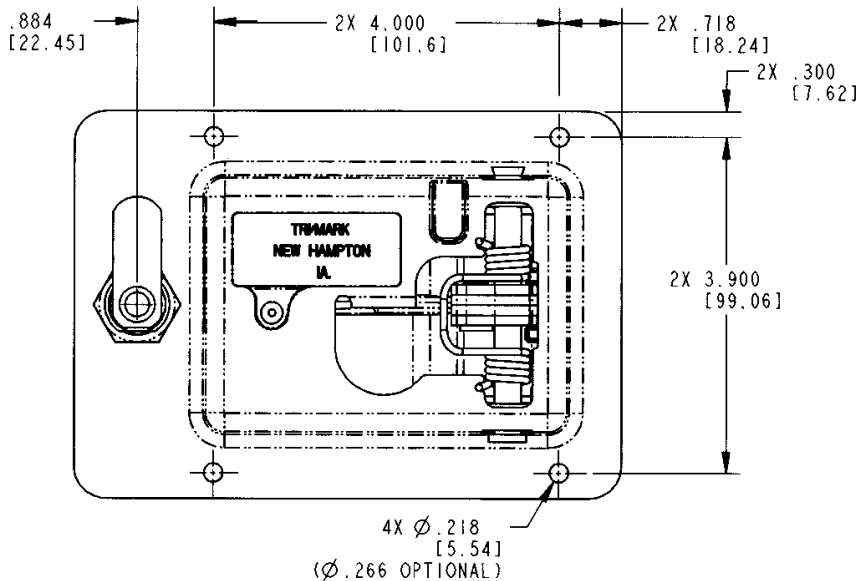
## 030-0550 FEATURES:

- The high strength steel laminated hook resists wear and increases strength
- Heavy duty zinc die-cast paddle resists deformation
- Retrofits the same cutout as the 030-0500 Pivoting Catch Compartment Latch



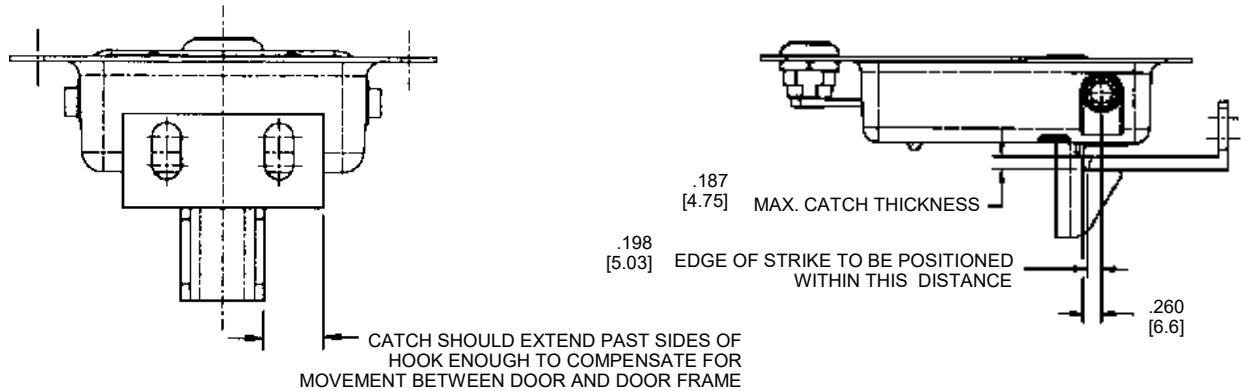
**CAUTION:** Latch does not meet FMVSS 206 load requirements.

Individual part dimensions are for reference only. Refer to individual part drawings for complete dimensions, specifications, and installation procedures. Engineering assistance and application drawings are available.



For more information visit  
[www.trimarkcorp.com](http://www.trimarkcorp.com)

**RECOMMENDATIONS FOR SIZE AND POSITION OF  
STRIKE MADE FROM ANGLE MATERIAL**



**RECOMMENDATIONS FOR SIZE AND POSITION OF  
STRIKE MADE FROM ANGLE MATERIAL**

